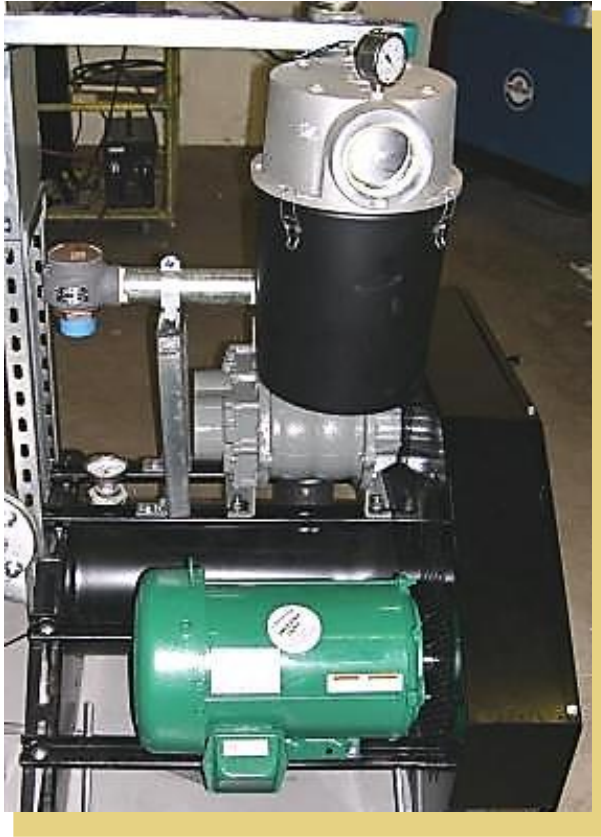


# ***RLP Series***

## ***Rotary Lobe Pressure System***



### **Applications**

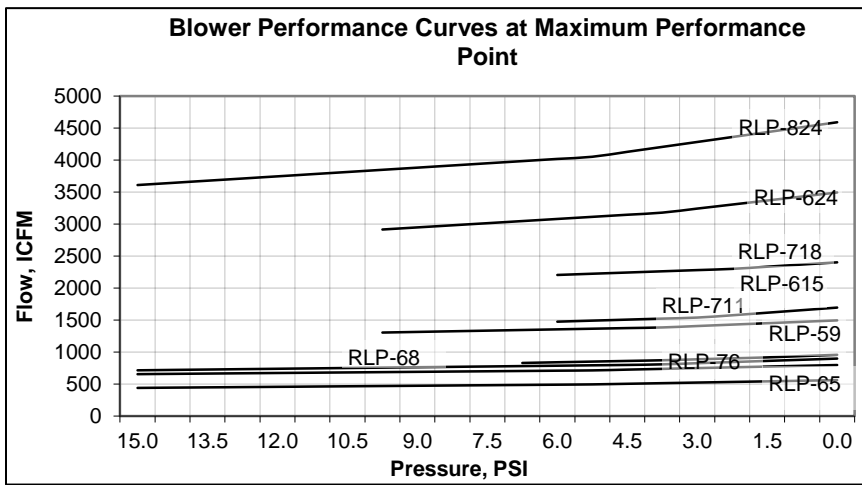
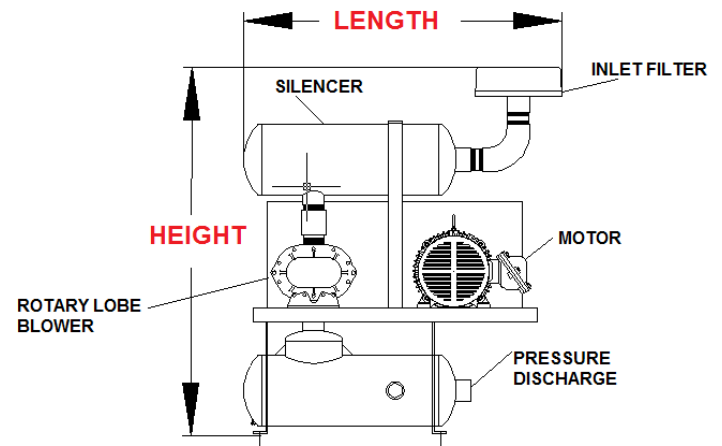
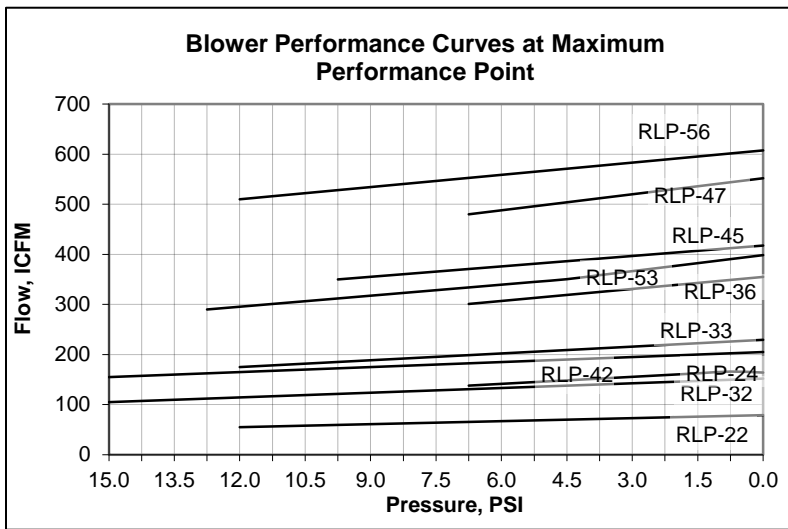
- Medium pressure bio-venting and air sparging
- Sewage/wastewater aeration
- Bio-reactor oxygenation
- Bio-pile venting
- Pneumatic conveying
- Remediation Industry

### **Features & Specifications**

- Featuring **Roots** and **Sutorbilt** positive displacement blowers with cast iron casing and impellers, steel shaft, spur timing gears with splash oil lube, roller bearing on the drive side, lip seal
- V-Belt driven to maximize operating efficiency for actual conditions
- Oilless airstream operation, oil and grease do not contact the airstream
- Premium efficiency reactive or absorptive silencer to minimize radiated noise
- Motor mounted on adjustable sliding base
- UL approved drive motor with permanently sealed ball bearings, coupling and guard, approved for Class I, Division I, Group D classified environment per NEC
- Belt guard cover per OSHA requirements
- Flexible couplings on blower inlet and outlet to isolate piping from blower vibration
- Differential pressure gage to monitor filter
- Paper inlet air filter with replaceable paper element for 99%+ removal of 2 micron & larger particles, easy access to filter w/ butterfly nut
- Skid mounted assembly for easy moving and handling
- Pressure relief valve to protect blower from damage from high pressure conditions

**H2K Technologies, Inc.**  
7550 Commerce St  
Corcoran, MN 55340  
Phone: 763.746.9900  
Fax: 763.746.9903  
[www.H2KTECH.com](http://www.H2KTECH.com)  
[Sales@H2KTech.com](mailto:Sales@H2KTech.com)

Model Number	Dim A In.	Dim B In.	Dim C In.	Dim Width In.	Blower Inlet/Outlet In	Max. Motor HP	Available Voltage	Shipping Weight Lbs.	Max. Noise Level At 3 feet
RLP-22	54"	46"	9"	24"	1" FPT	5	230 VAC 1 phase (5hp max) 230/460 VAC 3phase	660	93 dBA
RLP-24	54"	46"	9"	24"	2" FPT	7.5	230 VAC 1 phase (5hp max) 230/460 VAC 3phase	670	90 dBA
RLP-32	54"	46"	9"	24"	1.25" FPT	10	230 VAC 1 phase (5hp max) 230/460 VAC 3phase	770	90 dBA
RLP-33	54"	46"	9"	24"	2" FPT	15	230 VAC 1 phase (5hp max) 230/460 VAC 3phase	810	95 dBA
RLP-36	58"	50"	10"	30"	2.5" FPT	15	230/460 VAC 3phase	1,070	92 dBA
RLP-42	56"	46"	9"	24"	1.5" FPT	15	230/460 VAC 3phase	830	99 dBA
RLP-45	58"	50"	10"	30"	2.5" FPT	20	230/460 VAC 3phase	1,055	96 dBA
RLP-47	58"	64"	11"	30"	3" FPT	20	230/460 VAC 3phase	1,340	94 dBA
RLP-53	58"	50"	10"	30"	2.5" FPT	25	230/460 VAC 3phase	1,100	98 dBA
RLP-56	63"	70"	12"	36"	4" FPT	40	230/460 VAC 3phase	1,480	98 dBA
RLP-59	63"	70"	12"	36"	4" FPT	30	230/460 VAC 3phase	1,540	94 dBA
RLP-65	63"	64"	11"	30"	3" FPT	40	230/460 VAC 3phase	1,560	98 dBA
RLP-68	68"	76"	14"	36"	5" FPT	60	230/460 VAC 3phase	2,310	98 dBA
RLP-615	72"	86"	16"	36"	6" 150 lb flange	50	230/460 VAC 3phase	3,150	93 dBA
RLP-76	63"	70"	12"	36"	4" FPT	60	230/460 VAC 3phase	1,950	100 dBA
RLP-711	78"	86"	16"	36"	6" 150 lb flange	75	230/460 VAC 3phase	3,360	97 dBA
RLP-718	100"	115"	13"	40"	8" 150 lb flange	75	460 VAC 3phase	3,870	94 dBA
RLP-624	118"	146"	16"	40"	10" 150 lb flange	200	460 VAC 3phase	4,120	101 dBA
RLP-824	118"	159"	18"	40"	12" 150 lb flange	300	460 VAC 3phase	5,340	103 dBA



### Options

- Inlet vacuum relief valve
- Air bleed valve with filter/silencer
- Variable frequency drive to control actual flow rate or pressure, manual or automated adjustment
- Air cooled after cooler to cool exhaust for various piping limits
- Sound enclosure with urethane sound insulation to reduce sound level 10-15 dBA at 3'
- Flow, pressure, level & temperature gages or transmitters
- Custom control panel to control blower, pump and other equipment if required